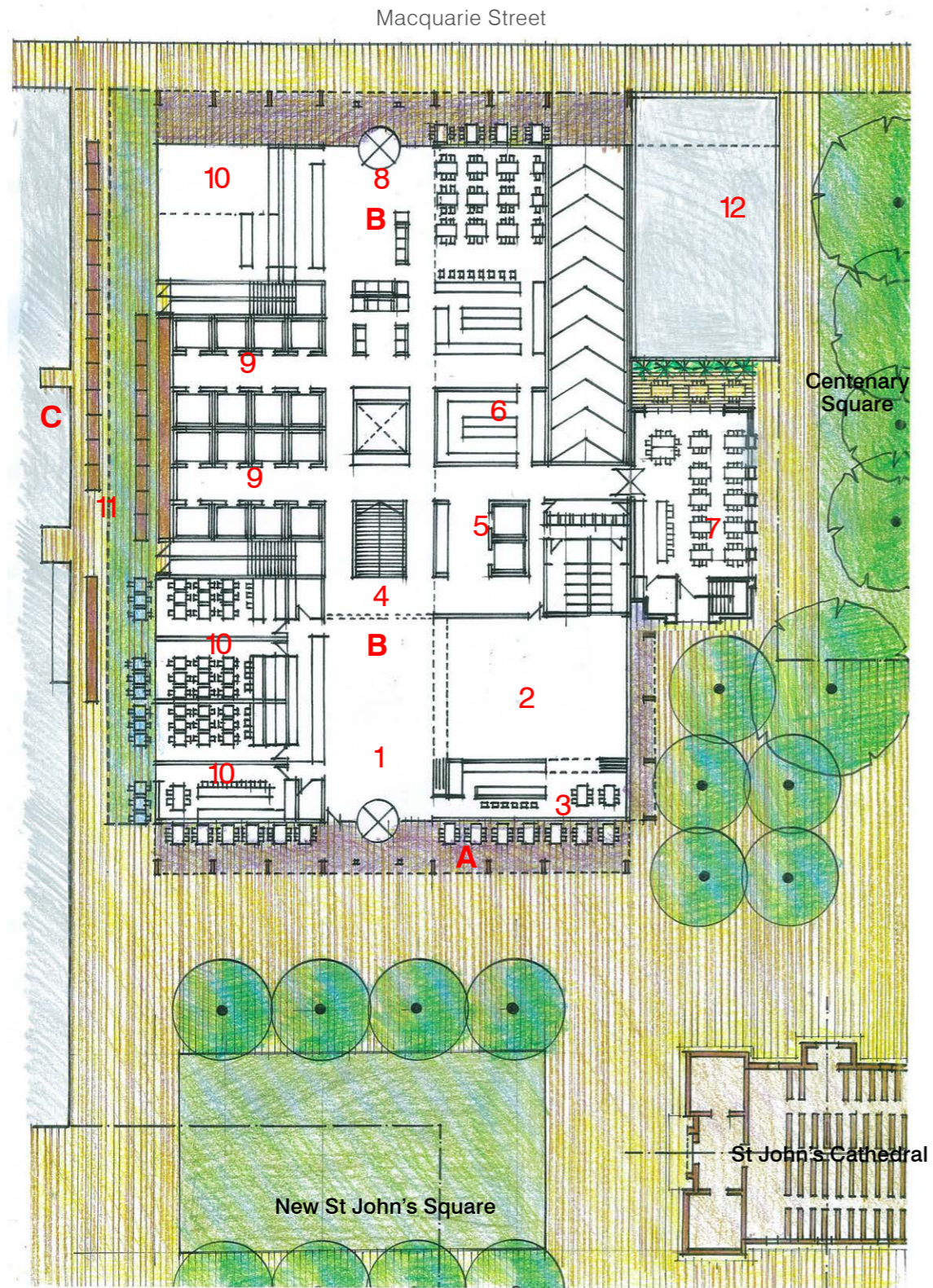




St John's Anglican Cathedral, Parramatta

Ground plane analysis

St John's Anglican Cathedral Ground Plane



Character precedents



A
Collonade
Image: GPO



B
Internal lobbies
Image: 1 Farrer Place
(Governor Phillip Tower)



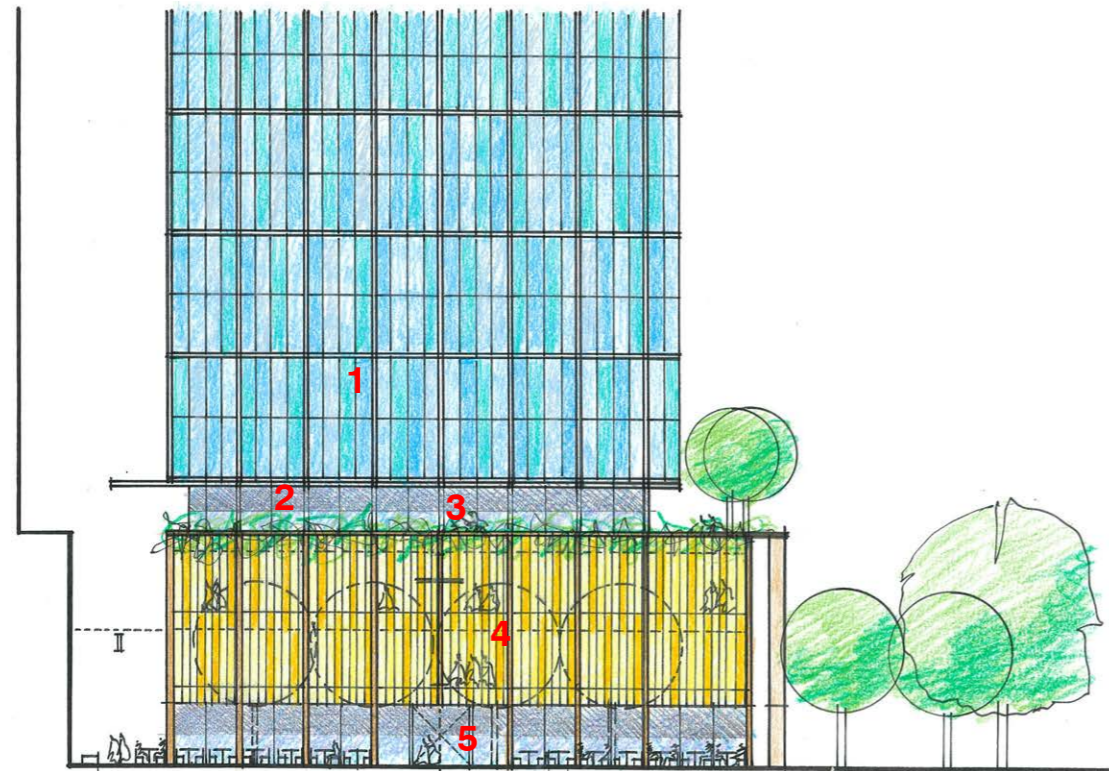
C
New laneway
Image: World Square

1	Entry lobby	7	Administration
2	Multipurpose space	8	Commercial entry lobby
3	Bar/servery	9	Commercial lift lobbies
4	Stairs (up to congregation, down to auditorium)	10	Active retail
5	Parish lift lobby	11	Weekend markets
6	Large parish kitchen	12	Restaurant (existing)

1:500 0 5 10 15 20 25M

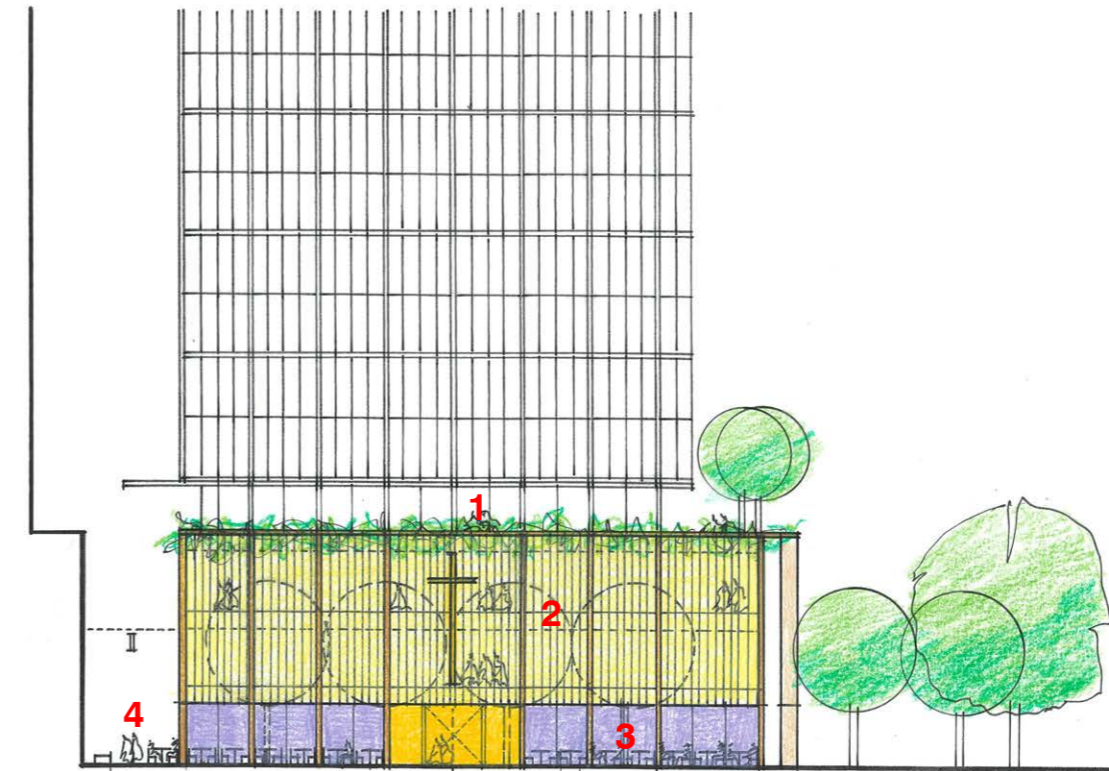
St John's Anglican Cathedral Ground Plane

Form and expression



- 1 High quality commercial tower
- 2 Projecting awning mitigates wind impacts
- 3 Landscaped terrace articulates podium and tower
- 4 Civic expression including language of cloisters
- 5 Active edge to new square

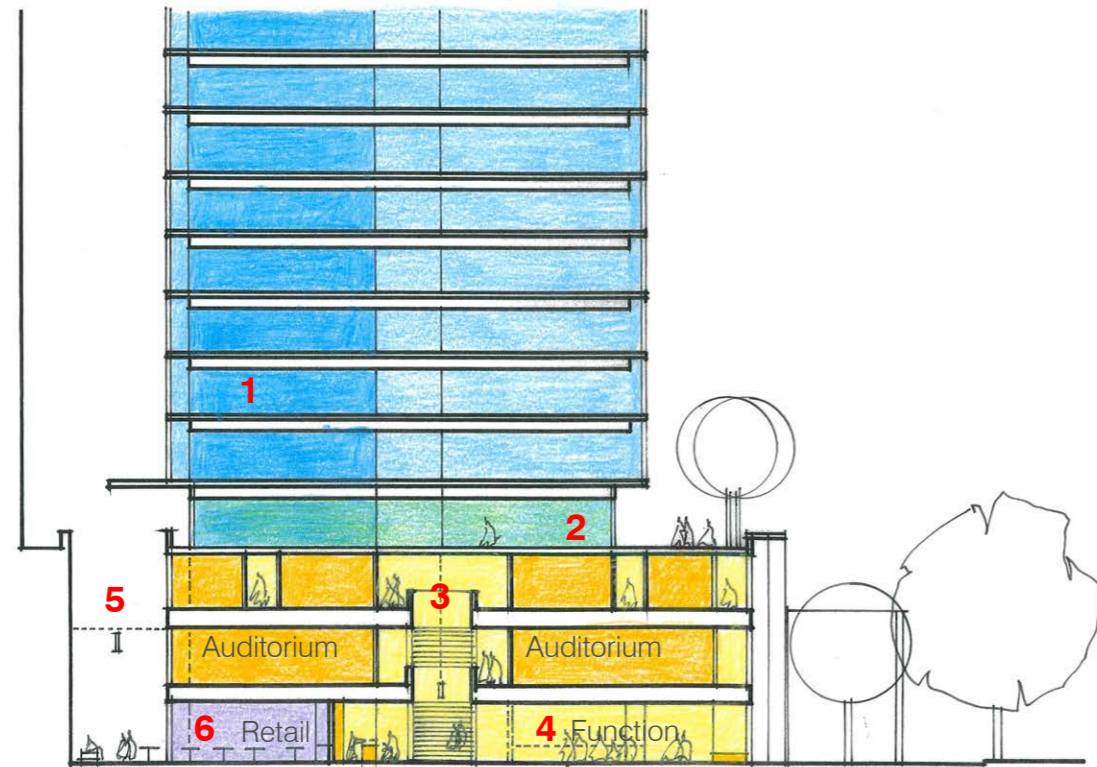
Use and activation



- 1 Landscaped terrace provides outlook and activity for events
- 2 Auditoria and break out spaces activate the podium facade
- 3 Colonade engages square at all hours
- 4 Lane including eateries and market - active at all times

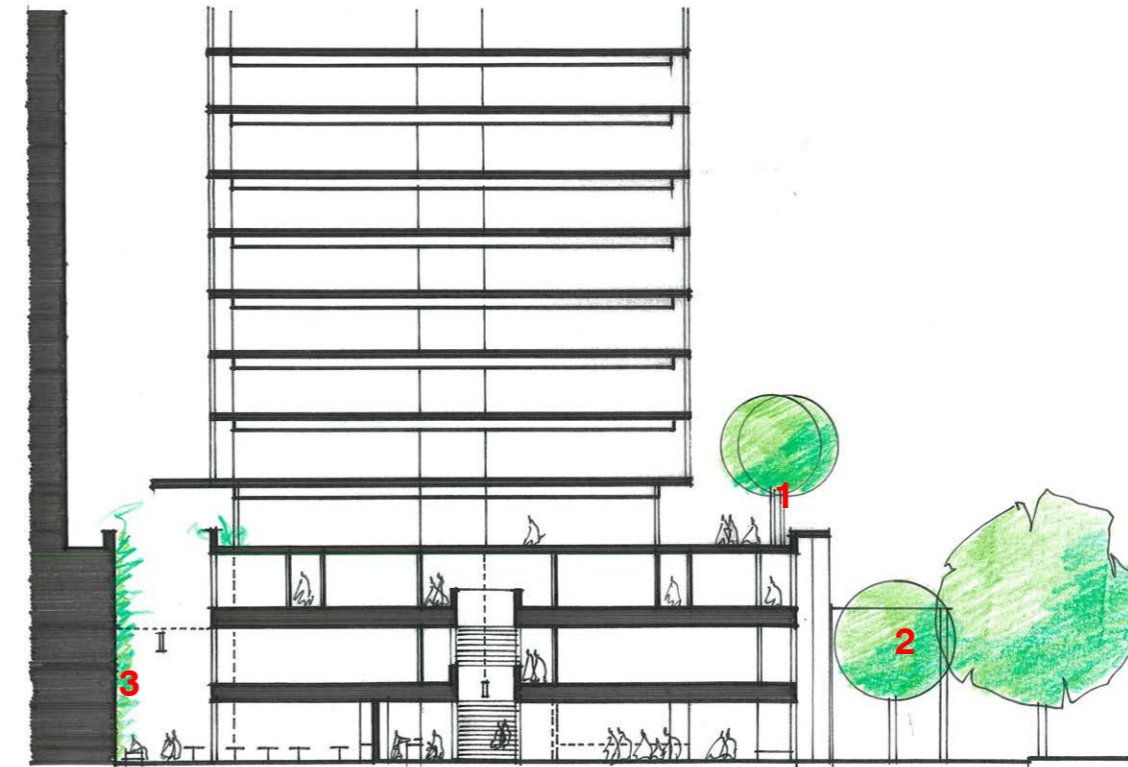
St John's Anglican Cathedral Ground Plane

Use and internal organisation



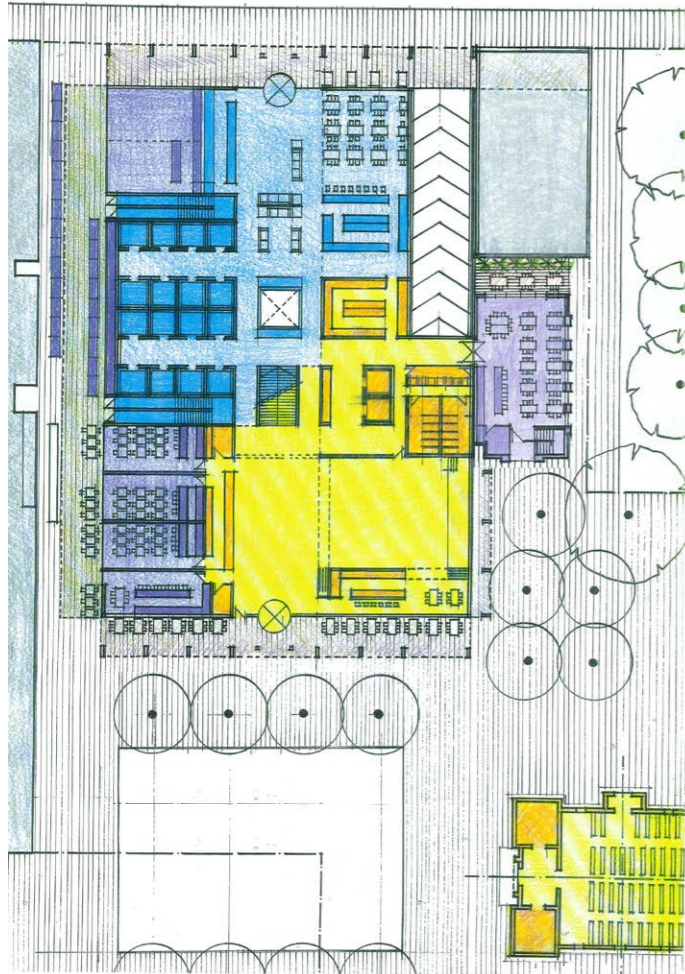
- 1** Core location optimises light and outlook at commercial levels
- 2** Terrace level concentrates events and open air activation
- 3** Atrium provides civic character and clarity to the layout
- 4** Reception and function spaces provide welcome area and capacity for high volume events
- 5** Lighting provides character and security
- 6** Retail activates lane

Landscape and character



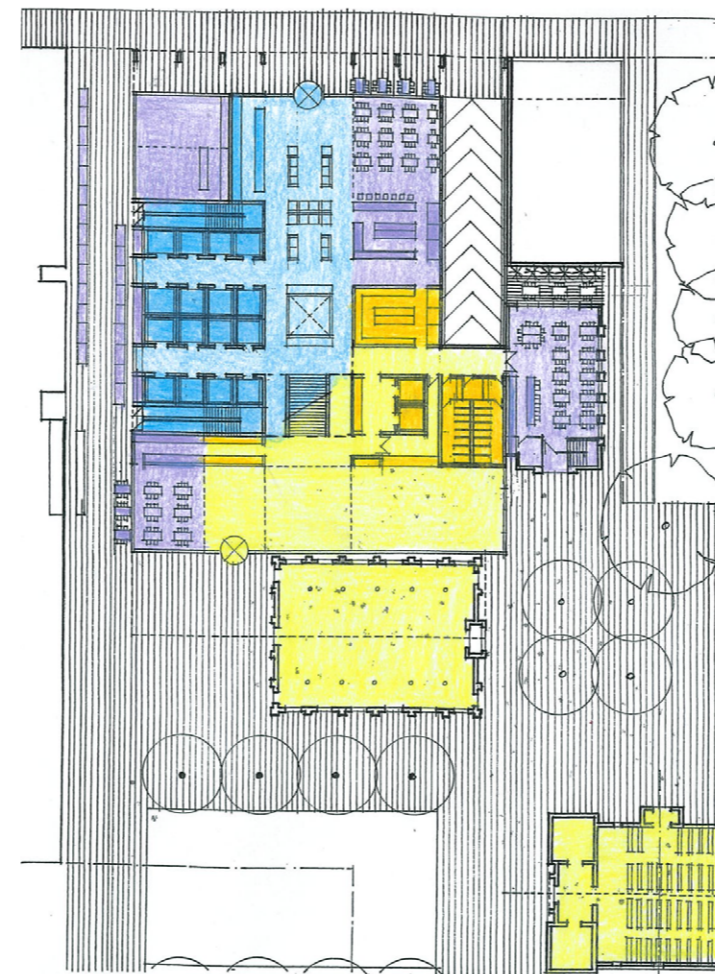
- 1** Landscape softens terrace and encourages frequent use
- 2** Additional trees embrace ground floor function spaces and continuity with internal space
- 3** Opportunities for green wall to enhance lane character

St John's Anglican Cathedral Ground Plane- Use and Character



Proposal - Creating civic space

- Uses respond to required programme and the activation of adjacent public domain.
- Distribution of uses maximise activation, legibility and way finding, flexibility and civic character.
- Alignment of key uses and entries align with anticipated pedestrian movement, parish activities, public events and Parramatta's broader spatial network.

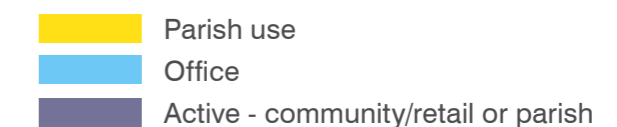


Hall retained

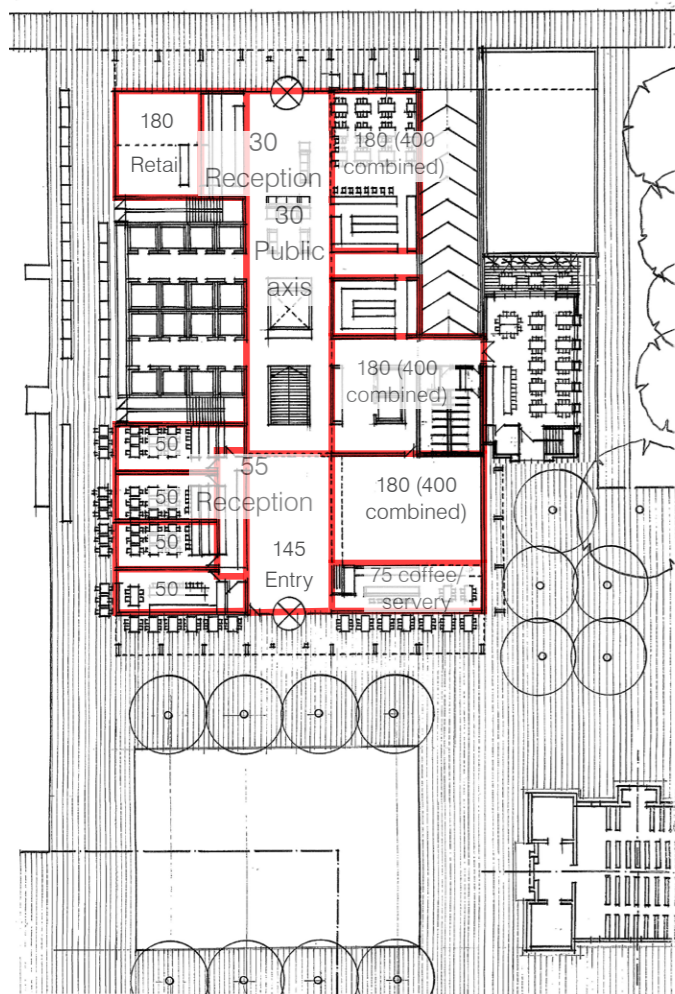
- Retaining the existing parish hall largely maintains the substandard character of public domain.
- Uses and open spaces fragmented behind the inactive facade of the existing parish.
- The retained existing parish hall greatly constrains flexibility, activation and the creation of a new civic square.



Ground plane activation is essential to the urban design quality, amenity and security of the future public space. The removal of the hall allows for unobstructed frontages and continuous activation of the new public square and laneway.

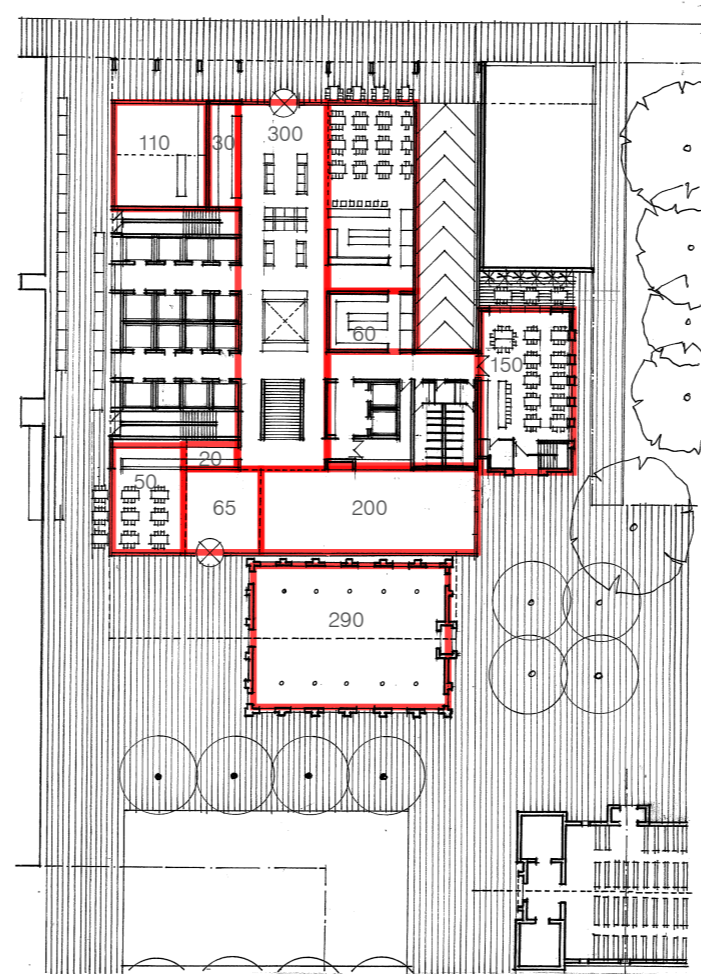


St John's Anglican Cathedral Ground Plane- Areas



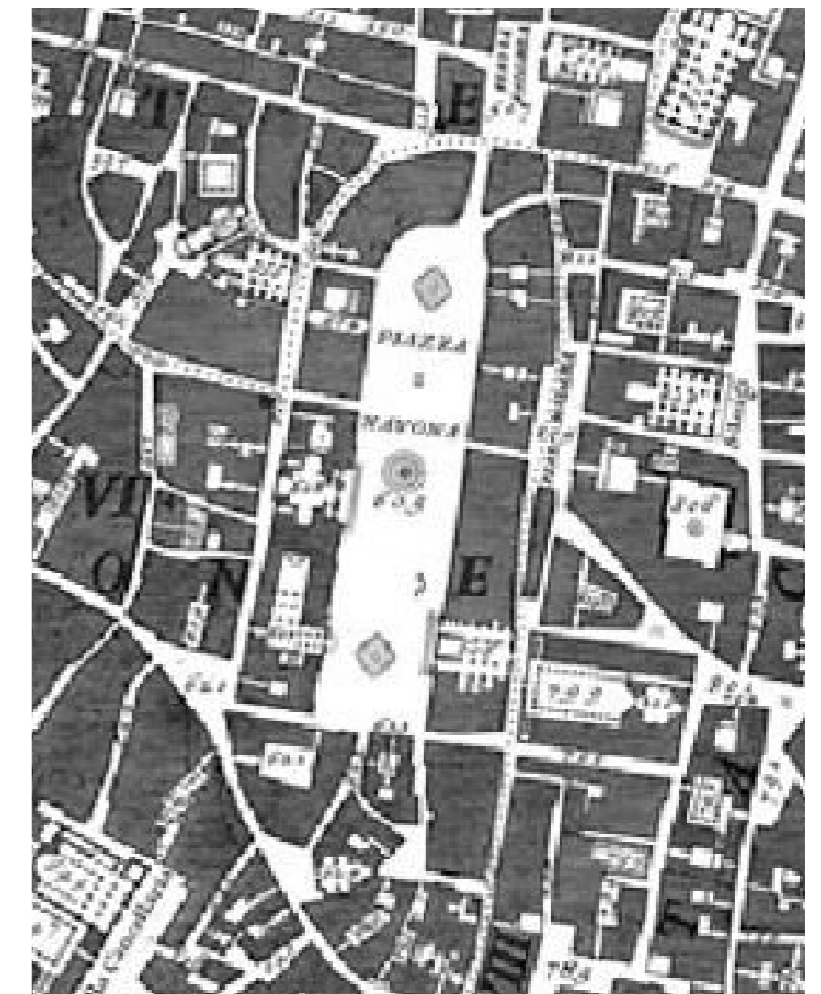
Proposal - Creating civic space

- Achieve the clients brief for Parish and community uses
- Ensure St Johns can capitalise to facilitate activities in its historic location.
- Allows for flexibility for specific, autonomous functions
- Ensures feasible active uses along public domain



Hall retained

- These areas demonstrate that activation is substantially reduced not only along the front but around St John's Square which is dominated by the closed facade of the existing Parish Hall.
- The new flexible activity space is significantly reduced in size (400sqm to 200sqm) and the existing hall - outwards for current and future uses - remains inflexible and highly constrained.



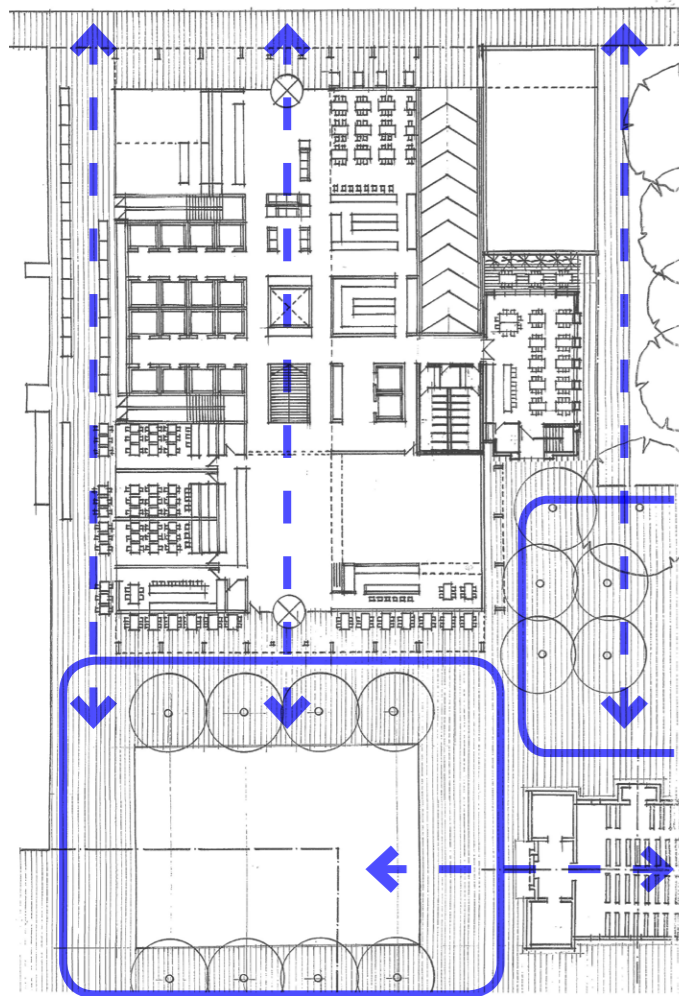
The history of urban design tells us that a distribution of well considered uses in appropriately sized and designed spaces creates great urban networks.

The removal of the hall allows for a clearly articulated podium plan that addresses the Parish requirements for auditoria and gathering spaces, as well as continuous active edges to all public spaces.

The retention of the hall constraints the arrangement and flexibility of gathering spaces and reduces the amount of active edges.

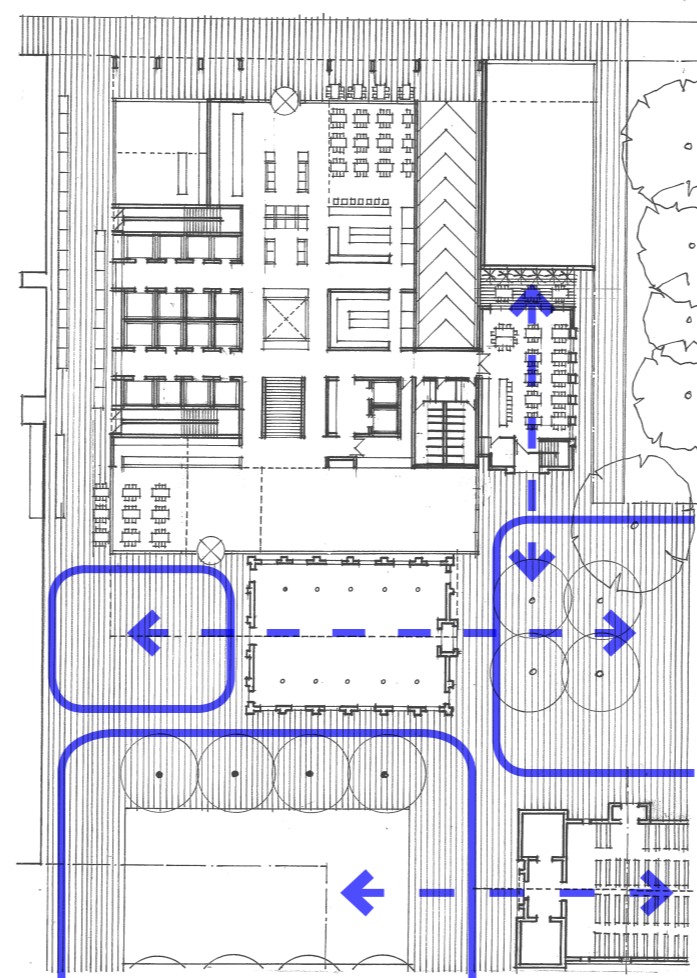
(Image: Rome, Italy)

St John's Anglican Cathedral Ground Plane- Spatial Definition



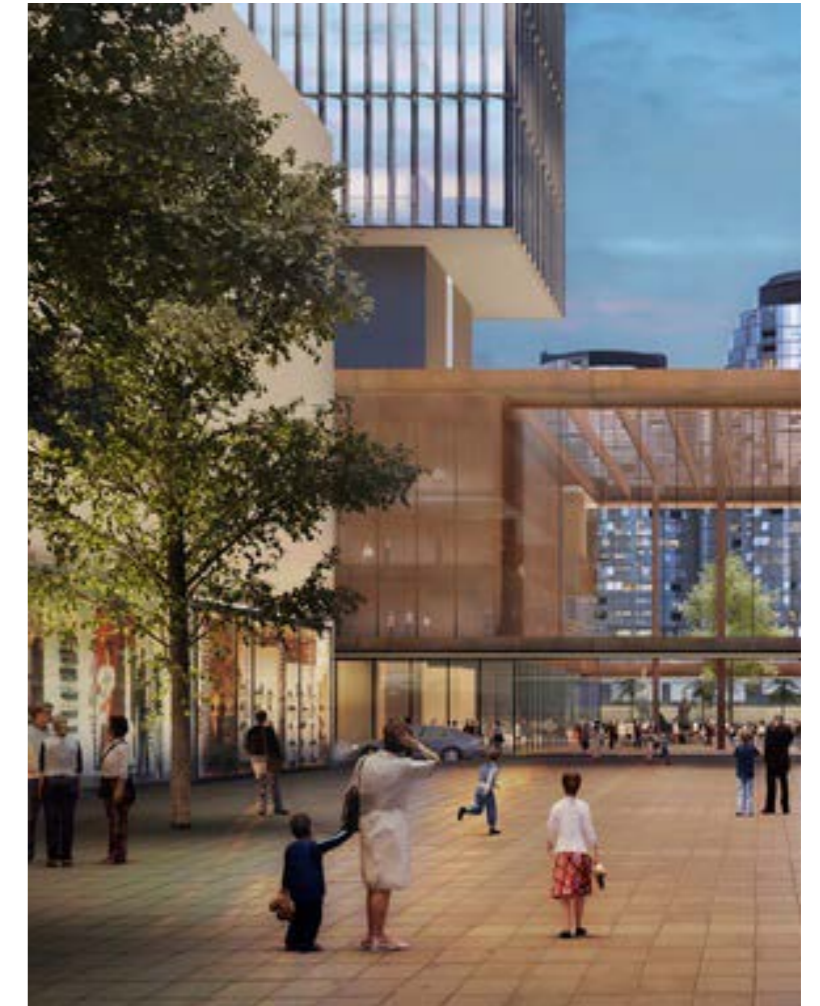
Proposal - Creating civic space

- Reforms building edges to clearly define new civic square.
- Responds to Cathedral axis with major civic access.
- Reinforces Cathedral presence in Parramatta open space network.



Hall Retained

- Retention of existing hall reduces and disperses spaces adjacent to the cathedral.
- Existing civic axes prevail, reducing visual and physical clarity.
- Cathedral's improvised presence in Parramatta's open space network remains unchanged.



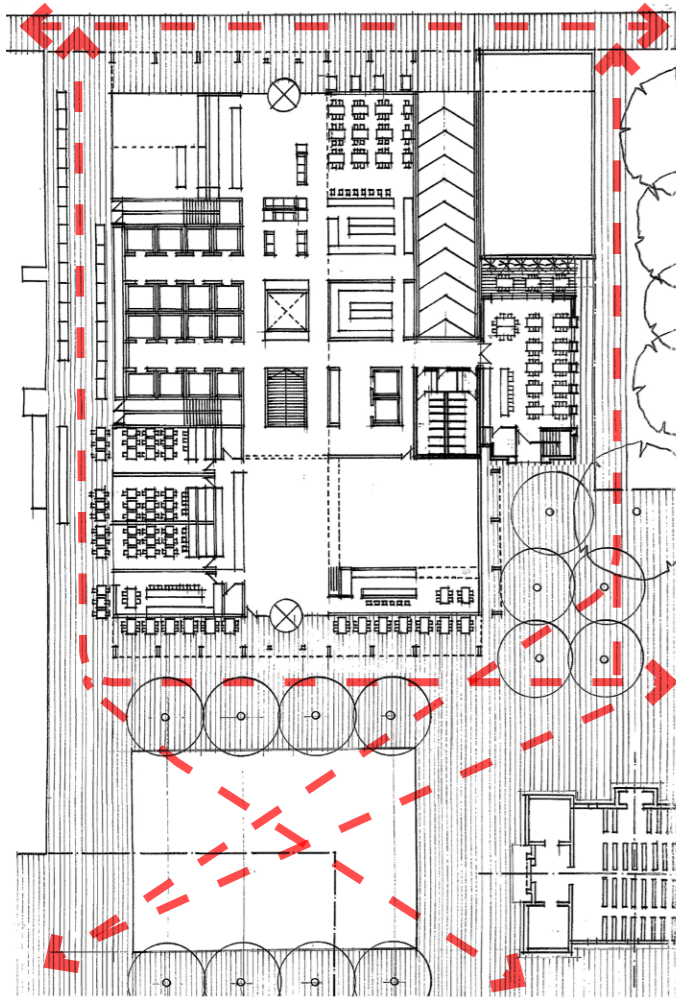
Clearly defined urban spaces aligned with key axes and sight lines ensures the public open space will be active, amenable, and well used.

The removal of the hall allows for clearly a clearly defined public square with dramatic cross-site axes, great permeability and a strong relationship with Australia's oldest functioning Cathedral.

In contrast, the retention of the hall creates a number of smaller spaces and obscures the site's key urban axes, thereby reducing its celebration of the Cathedral and integration with surrounding spatial networks.

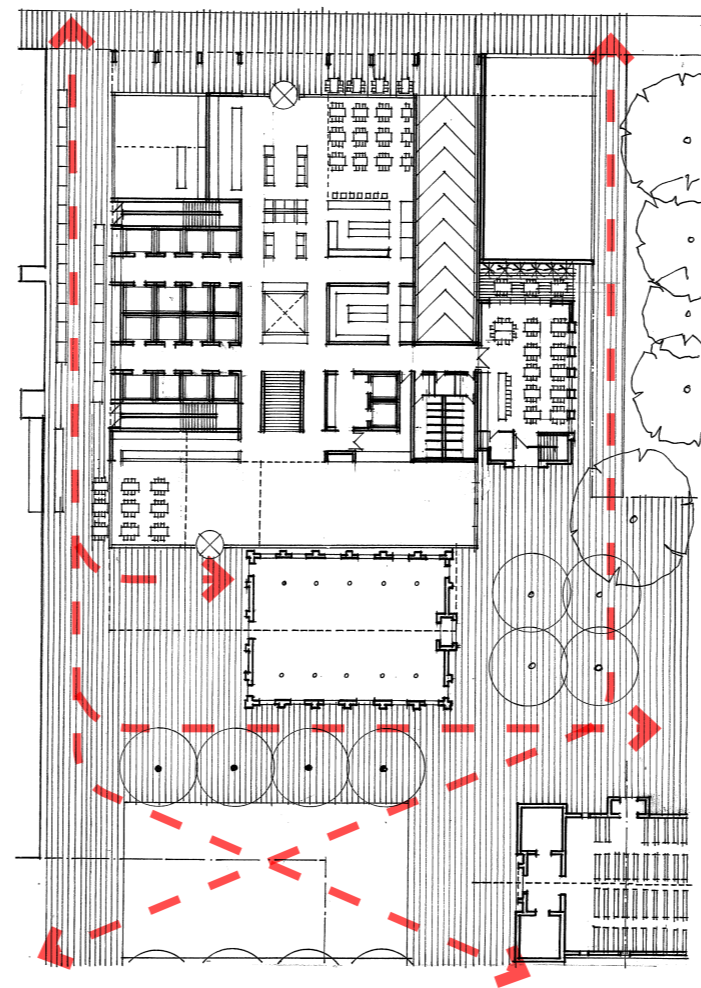
(Image: EQ West - Kerry Hill Architects)

St John's Anglican Cathedral Ground Plane- Public Circulation



Proposal - Creating civic space

- Larger square
- Optimises visibility and physical interaction with the Cathedral.
- Activates existing and proposed public spaces.
- Optimises pedestrian legibility and way finding through new Civic Square.



Hall retained

- Smaller square
- Retention of existing hall constrains visible and physical interaction with Cathedral and adjacent spatial network.
- Existing hall presents inactive edges to adjacent public spaces.
- Existing hall constraints legibility and way finding through new civic space



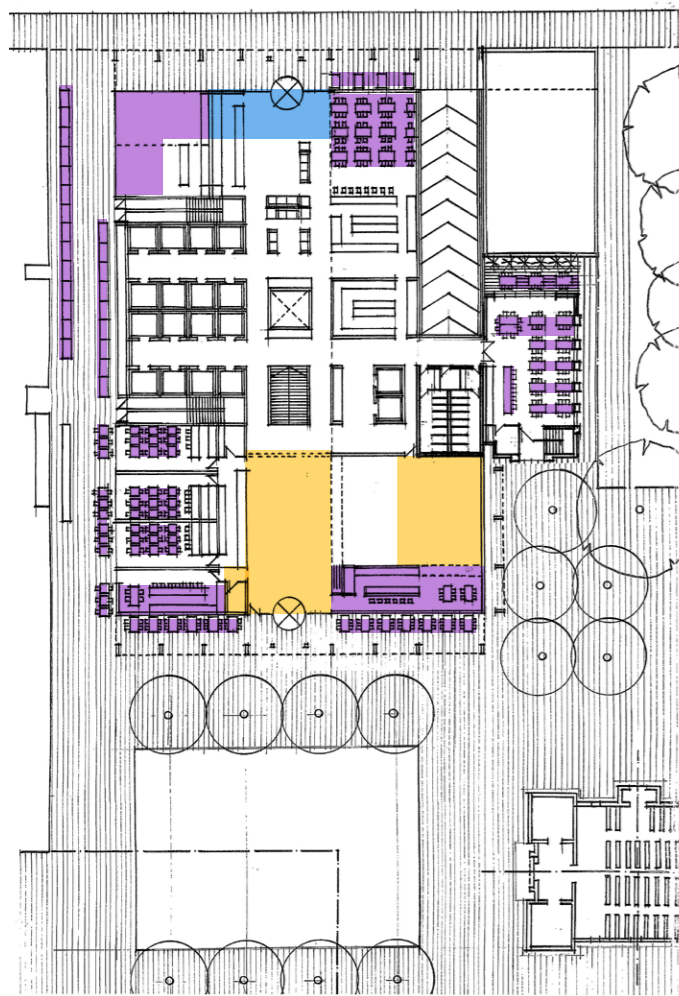
Clear sight lines and spatial definition, ensure that pedestrian movement aligns with proposed open spaces and activities.

The removal of the hall optimises movement through the proposed lane, across the new public square, to adjacent facilities (including the Cathedral and new gathering spaces) and Parramatta Square beyond.

The retention of the hall separates the lane from the new square(s) and radically reduces pedestrian awareness of both the new uses and open spaces proposed.

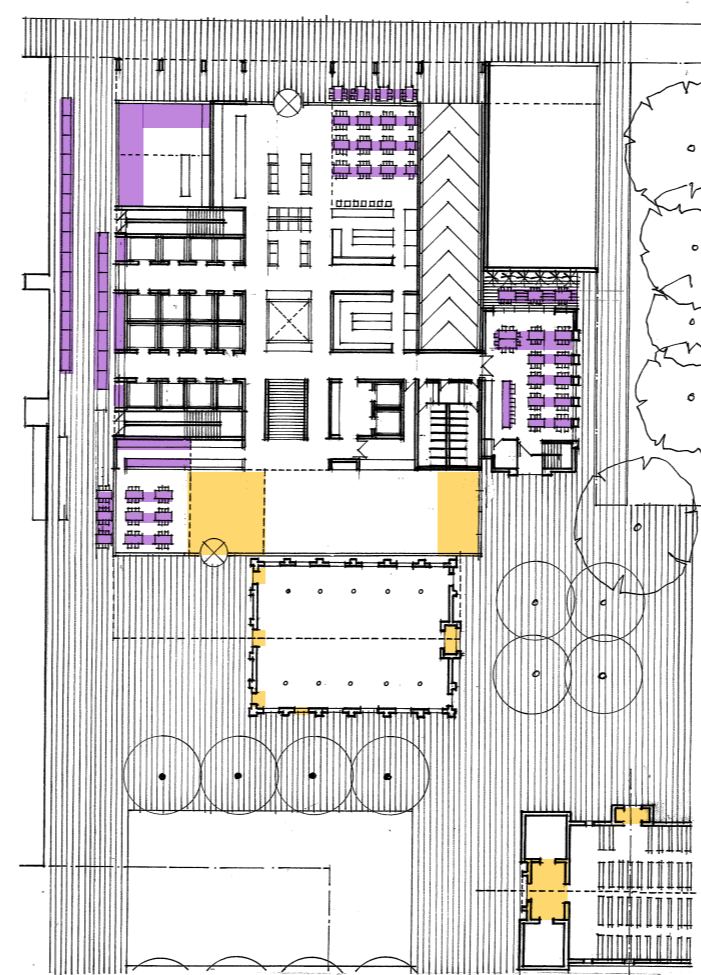
(Image: Centenary Square, Parramatta)

St John's Anglican Cathedral Ground Plane- Activation



Proposal - Creating civic space

- Retail, market, parish and lobby entities activate all edges to existing and proposed public domain.
- Combination of uses ensure that activation at all frontages will maximise safety and security.
- Activated edges reinforce proposed spatial definition and pedestrian movement.



Hall retained

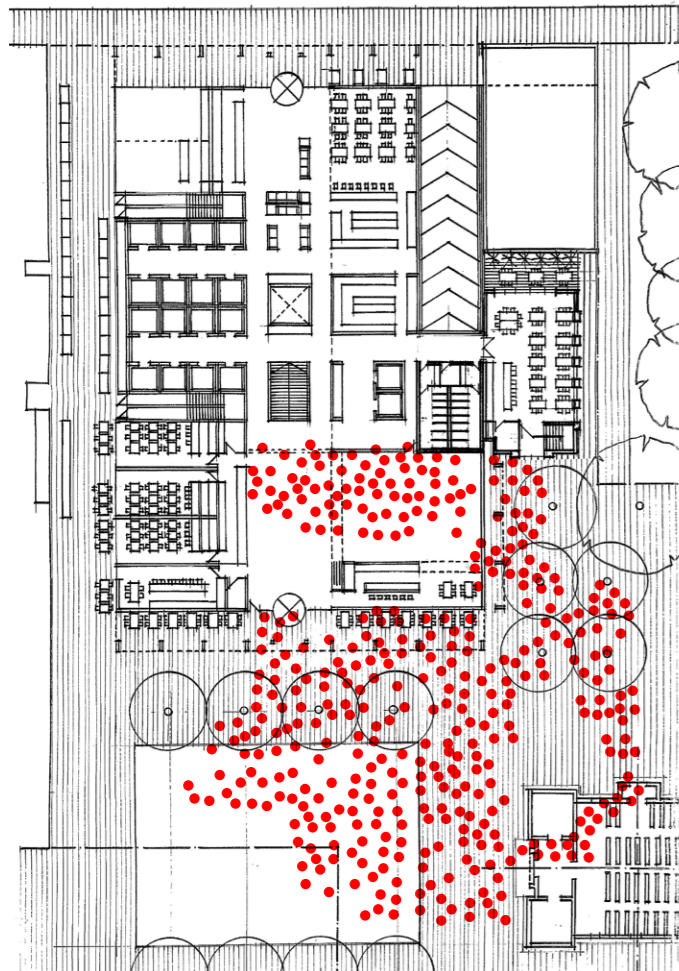
- Active retail and parish frontages greatly reduced with retention of existing Parish Hall.
- Discontinuous active edges creates large areas without activation at night, leading a largely unchanged security issue.
- The Cathedral main entry will continue to face into a lifeless open space.



Activating public spaces is a vital key to successful city planning. The removal of the hall maximises the extent and continuity of active uses, ensuring that open spaces proposed are amenable and secure at all times.

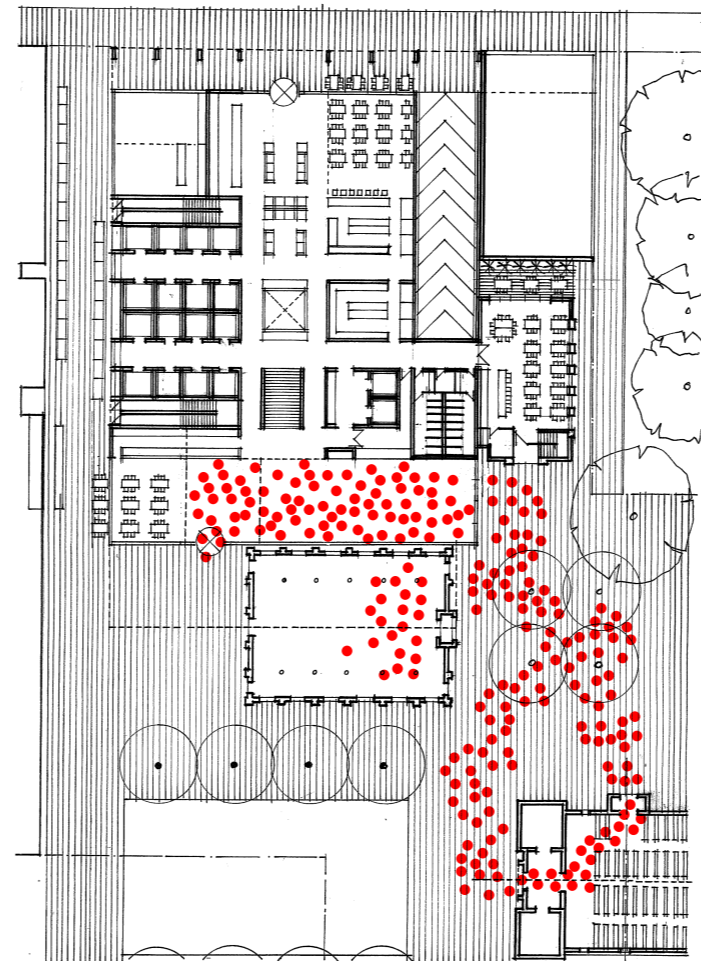
(image: Melbourne laneway)

St John's Anglican Cathedral Ground Plane- Parish Events



Proposal - Creating civic space

- Activates and celebrates civic potential of new civic square.
- Optimises interaction with the broader Parramatta community.
- Distributes congregation over a broad area, enhancing public domain character and use.



Hall retained

- As per the present situation, parish users will move within the eastern portion of the public domain and gravitate to two intricate gathering spaces.
- This reduces interaction with broader Parramatta community and fails to meet potential of adjacent public domain.
- This outcome fails to meet the requirement of the Parish and reduces potential provision of new community spaces.



There are currently three congregations that meet in the Cathedral and five that meet in the Parish Hall on a typical Sunday. The proposal will create additional break out spaces which are visually connected and provide space for people to spill into the surrounding public domain.

Opportunities for people to gather are severely limited at present, and the removal of the hall and the creation of a large integrated space which complements the Cathedral and is linked to the Cathedral by high quality public domain will encourage people to gather and in, and active the public space.